

Houston Area Volleyball Officials Chapter (HAVOC)

The PowerPoint used in tonight's presentation will be posted in the members area of HAVOCVBall.org. The recording of the meeting will be available on YouTube at a later date.

Monday, 27 July 2020

Other HAVOC Chapter Meeting Dates – 6:30 PM start time (2020 Season)

1. *Monday, 10 August 2020
2. *Wednesday, 02 September 2020
3. *Monday, 05 October 2020

Chapter Website
HAVOCVBALL.org

TASO Website
TASO.org

*Monday, 07 December 2020 – 6:00 PM start time
• First chapter meeting for **2021** season.

**Tentatively scheduled for online format but could change to in person.*



HAVOC Board Members

- Joanie Havens - President
 - jghavens@swbell.net
 - Cell: (713) 515-0981

- Augusto Rodriguez – Vice-President
 - axrodri11@gmail.com
 - Cell: (713) 449-2435

- Retta Pollio – Secretary/Treasurer
 - pollioretta@yahoo.com
 - Home: (281) 331-4654
 - Cell: (281) 382-9004

- Mary Beth Phelps - Assigner
 - havocvb@gmail.com
 - Home: (713) 475-8032

- Anne Myers – District Representative
 - mbluestripe@aol.com
 - Home: (713) 409-6990

- Tom Trigger – Member-At-Large
 - skankmaster2@aol.com
 - Cell: (713) 444-0427

- Ed Lau – Member-At-Large
 - edtlau@yahoo.com
 - Cell: (832) 755-0892

- Connie Brennan – Member-At-Large
 - cbrennan79.cb@gmail.com
 - Cell: (281) 615-2550

- Bobby Gonzalez – Member-At-Large
 - bobbgonz@sbcglobal.net
 - Cell: (713) 385-6030

- Dede MacPherson – Past President
 - dmacpherson13@comcast.net
 - Home: (281) 337-7206



TEST and MODULES

- www.TASO.org in the Members' Area
- Complete both the 2019 and the 2020 modules.
- You may want to look at [2020 TASO Volleyball Operating Procedures](#) in members portal of TASO.org.
- Take the test as if no COVID-19 accommodations exist.
- You may take the test up to 5 times. Your highest score will be your score of record. Chapter minimum score goal is **84**.



PAY and PAYSHEET

- Match fees have been increased \$5/match.
 - Varsity (3/5) \$65
 - JV/F (2/3) \$45
 - 7th/8th \$40
 - 7th/8th (developmental) \$20
- Pay-sheet on TASO.org in Members' Area.
 - Fill out and submit to school for each match.



METRO MILEAGE

- Metro WILL be used.
- Distance is one way *driving* distance from our center point (**1801 Allen Parkway**) to location facility (school or gymnasium).
- HAVOC Mileage Reimbursement – List of Schools (2020) (.pdf in members area)
- <https://www.uiltexas.org/athletics/calculate-mileage> (members area)



METRO MILEAGE

- 0 – 30 miles: \$15
- 31 – 60 miles: \$30
- 61 – 90 miles: \$45
- 91 – 120 miles: \$70



SCHEDULING

- Per UIL, no invitational tournaments will be allowed.
- 1A-4A: No change in schedule
 - 08/03: Practice allowed
 - 08/07: Scrimmages allowed
 - 08/10: Matches allowed
- 5A-6A: Delayed until 09/07
 - 09/07: Practice allowed
 - 09/11: Scrimmages allowed
 - 09/14: Matches allowed



SCHEDULING

- Due to uncertainty, schedules are being assigned only one month at a time.
- Saturday matches are a possibility.
- Once published, the time for acceptance will be short.
- Remember to contact your partner approximately one week ahead of the match.



MASKS and GLOVES

- Masks are to be solid in color with no logos, messages, or adornments. The preferred color is black or white. Official shall provide their own mask.
- Gloves may be worn at the discretion of the official. Official shall provide their own gloves.



ELECTRONIC WHISTLES

- Electronic whistles – attached to a black lanyard – may be used. Keep in mind their limitations:
 - Sound level is decreased.
 - Awkwardness in sounding whistle and correctly signaling in a timely manner is increased.
 - If an electronic whistle is used,
PRACTICE, PRACTICE, PRACTICE!



PROTOCOL for Match Day

- Individual schools/districts/facilities may have their own protocol upon entrance. **BE FLEXIBLE.**
- Masks are to be worn into and out of the facility.
- Masks may be worn for the duration of officiating duties at the official's discretion.



Before COACHES'/CAPTAINS' MEETING

- Home team is to establish their bench. This will be their bench for the duration of the match.
- Only 3 people allowed at score table
 - Scorer
 - Libero Tracker
 - Timer
 - Any other personnel (i.e. Announcer or opposing teams' scorer) need to sit behind or to the side of score table.



Before COACHES'/CAPTAINS' MEETING

- ~~A coach from each team shall submit in writing to the second referee a roster including names and uniform numbers of all players at the timed pre-match conference.~~ The roster will be placed on the score table prior to 10 minutes remaining on the pre-game clock.
- Failure to submit a roster in a timely manner results in an unnecessary delay (administrative yellow card) at the start of the set.



Before COACHES'/CAPTAINS' MEETING

- Teams are to limit the number of bench personnel to maintain social distancing.
- Identify host administrator on duty.

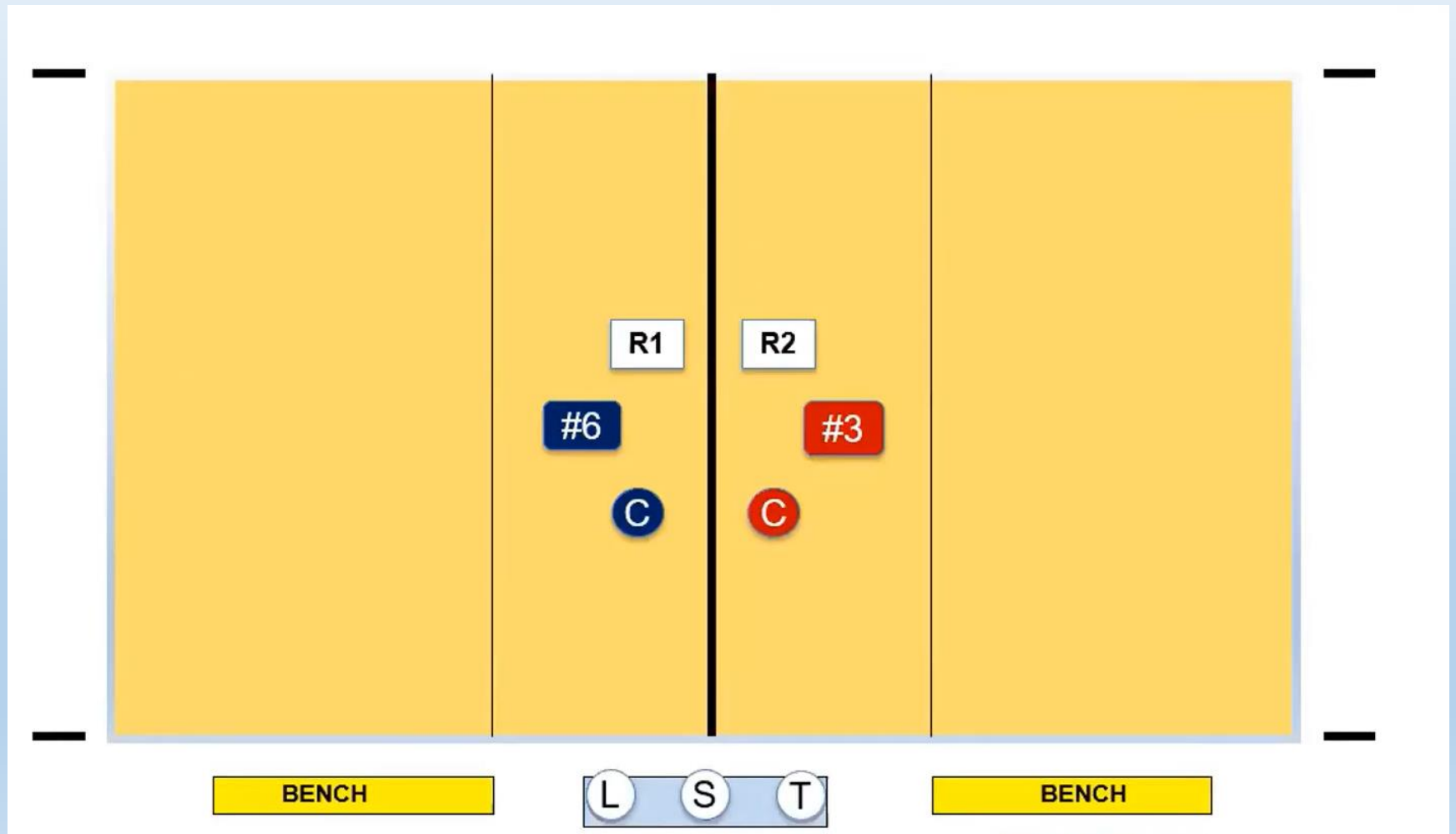


COACHES'/CAPTAINS' MEETING

- Prior to the first team (the visiting team) having exclusive use of the net, conduct the coaches'/captains' meeting.
- Held at center court, R1 on left side of net, R2 on right side (from score table perspective).
- ONE captain from each team.
- Practice social distancing.
 - If coach/player choose to stand close, it is not our job to separate.



COACHES'/CAPTAINS' MEETING



COACHES'/CAPTAINS' MEETING

- Introduce R1 and R2.
- Verify uniform/player legality.
- Cover ground rules and any special activities.
- Invite R2 to contribute.
- **There is no coin toss to start the match. Visiting team serves first in the first set, with teams alternating in subsequent non-deciding sets.**
- Coaches may **NOT** mutually agree to have home team serve first.



LINE JUDGE INSTRUCTION

- Practice social distancing.
- Instruct in a quiet place, if possible.
- Determine if multiple players will be LJ for match. Provide wipes for flags between players if used.
- If a LJ does not want to use flags, instruct them on the proper signals without flags (in, out, touch, antennae violation, screened from play).



INTRODUCTIONS/ANTHEM

- Teams line up on end lines.
- After introductions/anthem, R1 whistles and directs teams to their attack lines to wave to opponents, etc.
- R1 whistles and releases players to their starting positions.



DURING the MATCH

- Substitutions
 - R2 should maintain social distancing from players and score table personnel.



End of Set Before NON-DECIDING SET

- After the last point of the set is awarded,
- R1 whistles and shows “End of Set” signal (#21).
- R1 whistles and shows ~~“Change of Courts” signal (#22)~~ “Release to Bench” signal.
 - **Teams DO NOT SWITCH SIDES.**
- R2 directs clock operator to start clock.



End of Set Before DECIDING SET

- After the last point of the set is awarded,
- R1 whistles and shows “End of Set” signal (#21).
- R2 double whistles, holds up coin, and proceeds to center court with ONE captain from each team (with social distancing).



DECIDING SET

- Home captain calls the coin toss.
- The winner chooses SERVE or RECEIVE. (Choosing “side” is not an option.)
- R2 (no whistle) shows R1 the result.
- R2 directs the clock to start.



END OF MATCH

- R1 whistles and signals “End of Match” (#22).
- R1 signals teams to respective end lines.
- R1 whistles teams to attack lines to exchange pleasantries.
- R1 gets off stand and proceeds to gather belongings, puts on mask if needed, and with R2 exits facility.
- R1 and R2 debrief in the parking lot.



REVIEW: Significant Rules Changes 2019-2020

- Eliminates the solid-colored uniform requirements, establishes that the libero uniform must clearly contrast with his/her teammates' uniforms and reorganizes the legal uniform rule.
- Eliminates the use of double zero (00) as a uniform number option.



REVIEW: Significant Rules Changes 2019-2020

- Beginning with the **2023** season the body of the **uniform number must clearly contrast with the uniform top regardless of borders**. This will eliminate the allowance of borders to provide contrast between the number and the uniform number.



REVIEW: Significant Rules Changes 2019-2020

- Establishes that the line judge shall take their position and move in line with the extension of the end line when the ball is being served near the line judge's position replacing the old technique to move directly back in line with the sideline.



REVIEW: Significant Rules Changes 2019-2020

- Establishes that the ball remains dead when tossed for serve and it touches any part of the backboard or supports hanging in a vertical position over the serving area and is an illegal serve (Signal 13: out of bounds) and not a service fault.

13. Out-of-bounds/
Antenna Violation



REVIEW: Significant Rules Changes 2019-2020

- Clarifies the penalty for the removal of any part of the uniform top or bottom as a yellow card charged to the coach for unsporting conduct.



REVIEW: Significant Rules Changes 2019-2020

- Provides additional instructions for the second referee when conducting the coin toss prior to the deciding set by requiring the second referee to communicate with the first referee the serving team and the proper team benches.
- *NOTE: For the 2020-2021 season, teams will NOT changes benches.*



REVIEW: Significant Rules Changes 2019-2020

- Removes signal “Legal Back-Row Attack” from the chart and establishes the signal as an informal officials’ signal in the NFHS Officials Manual renumbering remaining signals.



Significant Rules Changes 2020-2021

- **4-1-4 (NEW):**
 - A protective face mask made of hard material may be worn but must be molded to the face with no protrusions.



Significant Rules Changes 2020-2021

- **7-1-1; 7-1-1 PENALTIES; 7-1-1 PENALTIES 2 (NEW); 9-9-1a (NEW); 10-3-7b:**
 - Eliminates the loss of rally/point penalty for failure to submit the team roster during the pre-match conference and replaces the penalty with an unnecessary delay (administrative yellow card).
 - *NOTE: For the 2020-2021 season, team rosters will be submitted prior to the prematch conference.*



Significant Rules Changes 2020-2021

•7-1-4a(1) & (2) NEW:

- If a team submits a lineup and lists a number that no team member is wearing, the team shall:
 1. Legally substitute a player with a legal number into that position. The team is charged with a substitution.
 2. Change the incorrect libero number to the legal libero number (no penalty is assessed).



Significant Rules Changes 2020-2021

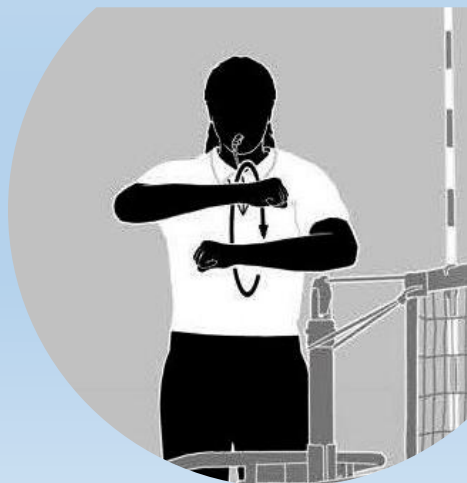
•12-2-6:

- Establishes that a yellow card issued for unsporting conduct to the head coach, assistant coach(es) or team bench will no longer require the head coach to remain seated, while maintaining that a red unsporting conduct card will require the head coach to remain seated for the remainder of the match.



Significant Rules Changes 2020-2021

- **Official Signal #15 (substitution):**
 - Two short whistles, rotate **forearms around each other with closed hands** at shoulder height two times.



2020-21 Volleyball Points of Emphasis

1. Bench Behavior/Sportsmanship

- Communicate with coaches to educate their teams of appropriate ways to celebrate.
- Excessive celebrations (e.g. coming onto the court) to celebrate may necessitate issuing an unsporting conduct penalty (Rule 12-2 PENALTIES).



2020-21 Volleyball Points of Emphasis

2. Management of Non-Team Personnel

- Communicate with coaches to educate school administration and school community about sportsmanship in volleyball.
- Appropriate time to cheer by cheerleaders, PA announcers, music/sound effects, location and behavior of fans and mascots.
- Inappropriate behavior is the sole responsibility of home management.



2020-21 Volleyball Points of Emphasis

3. Officials' Communication

- Pre-match conference between R1 and R2.
 - Expectations of R1
 - Questions from R2
 - Responsibilities and mechanics of administration of penalties (unnecessary delay and unsporting conduct)



2020-21 Volleyball Points of Emphasis

4. Uniform Bottom Compliance

- Manufacturer logos.
 - Rule 4-2-1f: “A single partial/whole manufacturer’s logo/trademark/reference, no more than 2 ¼ square inches with no dimension more than 2 ¼ inches, is permitted on each piece of the uniform provided placement does not interfere with the visibility of the player’s number.”
 - Manufacturers are producing spandex marketed for volleyball with large logos along the waistband. Worn with uniform tops tucked or untucked, these bottoms violate Rule 4-2-1f.



Closure

- Purchase any equipment/uniform needs well in advance of your first match.
- Frequently check the chapter website (HAVOCVBALL.org) for news, information, and updates. Also check the Members Area.
- REMINDER: Contact Joanie and Mary Beth on the same night if an **unsporting conduct red card** is issued.
- Contact Joanie/Augusto/Retta/Mary Beth or any other **board member** with specific issues.
- Q&A

